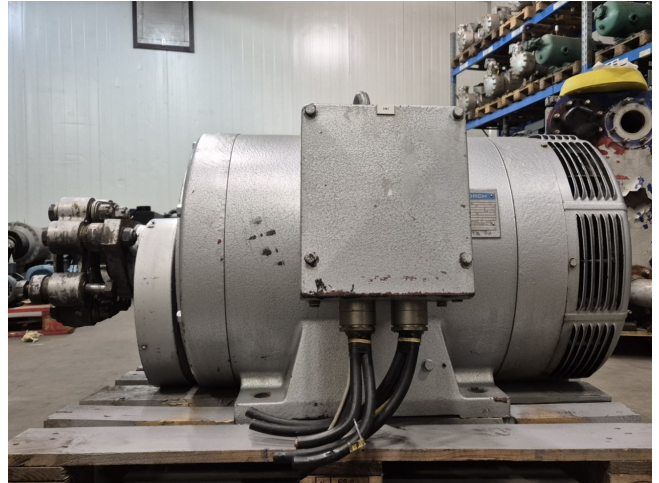


Schorch KN5315M-CB011Z

Specifications

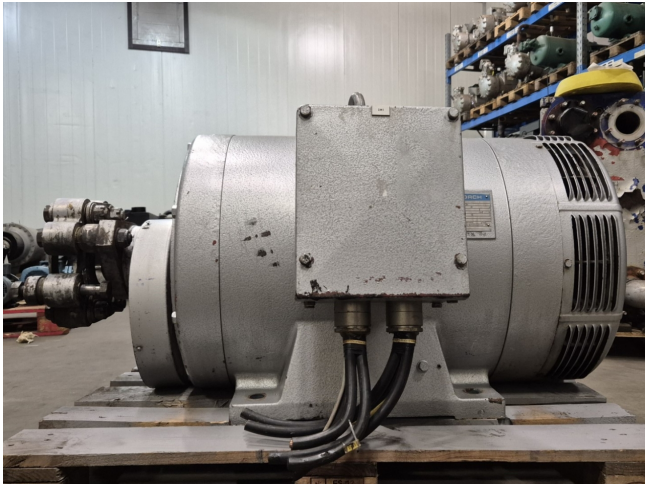
Brand	Schorch
Type	KN5315M-CB011Z
kW	132
RPM	985
Size & Weight	1340x860x760 mm (LxWxH) &
50 Hz / 60 Hz	50 Hz
Stock	1



Description

Used Schorch KN5315M-CB011Z

Used Schorch KN5315M-CB011 Z electric motor with the following specifications: 50 Hz - 132 kW - 985 RPM.



SCHORCH					
3~	Mot	Typ	KN 5315M-CB011 Z		
DIN-Baugr. 315 M		IP 23	Nr. 47022201 / 1		
380 V		245 A			
132 kW		cos φ 0,87			
985 /min		50 Hz			
V		A			
Isol.-Kl. 3		t			
Je Lager nach 6000		Betriebsst. 45 g Fett			
Sortenempfehlung siehe Betriebsanweisung					
Fettsorte :					
MADE IN GERMANY					



